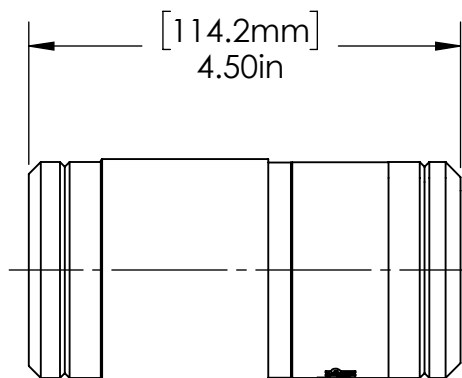
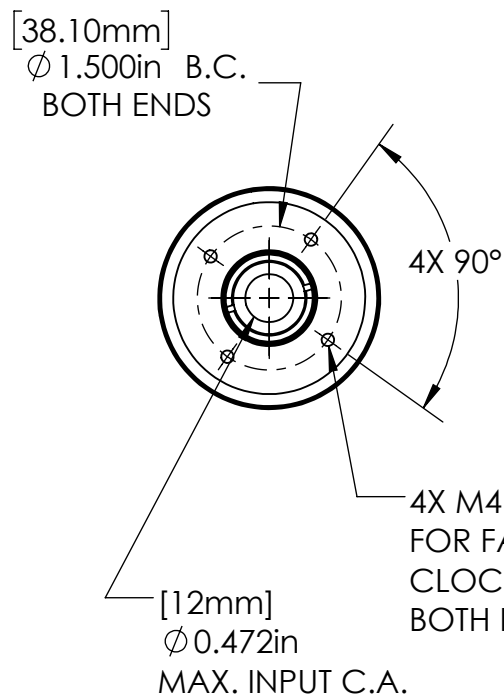


EXAMPLE PART NOS.:

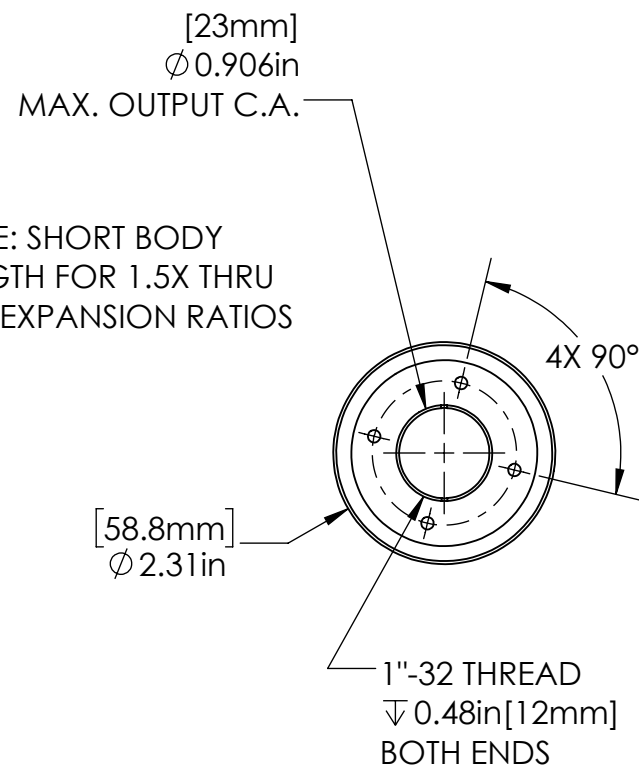
BEC-19-2.5-10.6-S: Laser Beam Expander/Collimator, 19mm Series, 2.5X Expansion Ratio, for use at 10.6 μ m, Short Body.


BEC-19-2.5-1064-S: Laser Beam Expander/Collimator, 19mm Series, 2.5X Expansion Ratio, for use at 1064-1070nm, Short Body.

Contact Haas LTI with your BEC-19 requirement.



NOTE: SHORT BODY
LENGTH FOR 1.5X THRU
3.0X EXPANSION RATIOS



FOR INFORMATION ONLY NOT FOR MANUFACTURING	DATE: 6/22/16	DRAWN BY: TA	CHK'D BY: GJH	TOLERANCES: (EXCEPT AS NOTED)	REV.	DESCRIPTION	DATE	APPD		37 IRONIA ROAD FLANDERS NJ 07836 (973) 598-1150 Fax: 598-1151	
HAAS DOC.# BEC-19-2.5-10.6-S-SALES				X.XXX= ± 0.005						BEC-19 2.5X BEAM EXPANDER/ COLLIMATOR - SHORT BODY LENGTH	BOM#
				X.XX= ± 0.01							
\haas-server\Engineering\salesengineering\TimWebsite16\19mm\BEC-19\BEC-19-2.5-10.6-S\				X/X = ± 1/64						SCALE: 1:2	
				ANGULAR: ±0.5°							